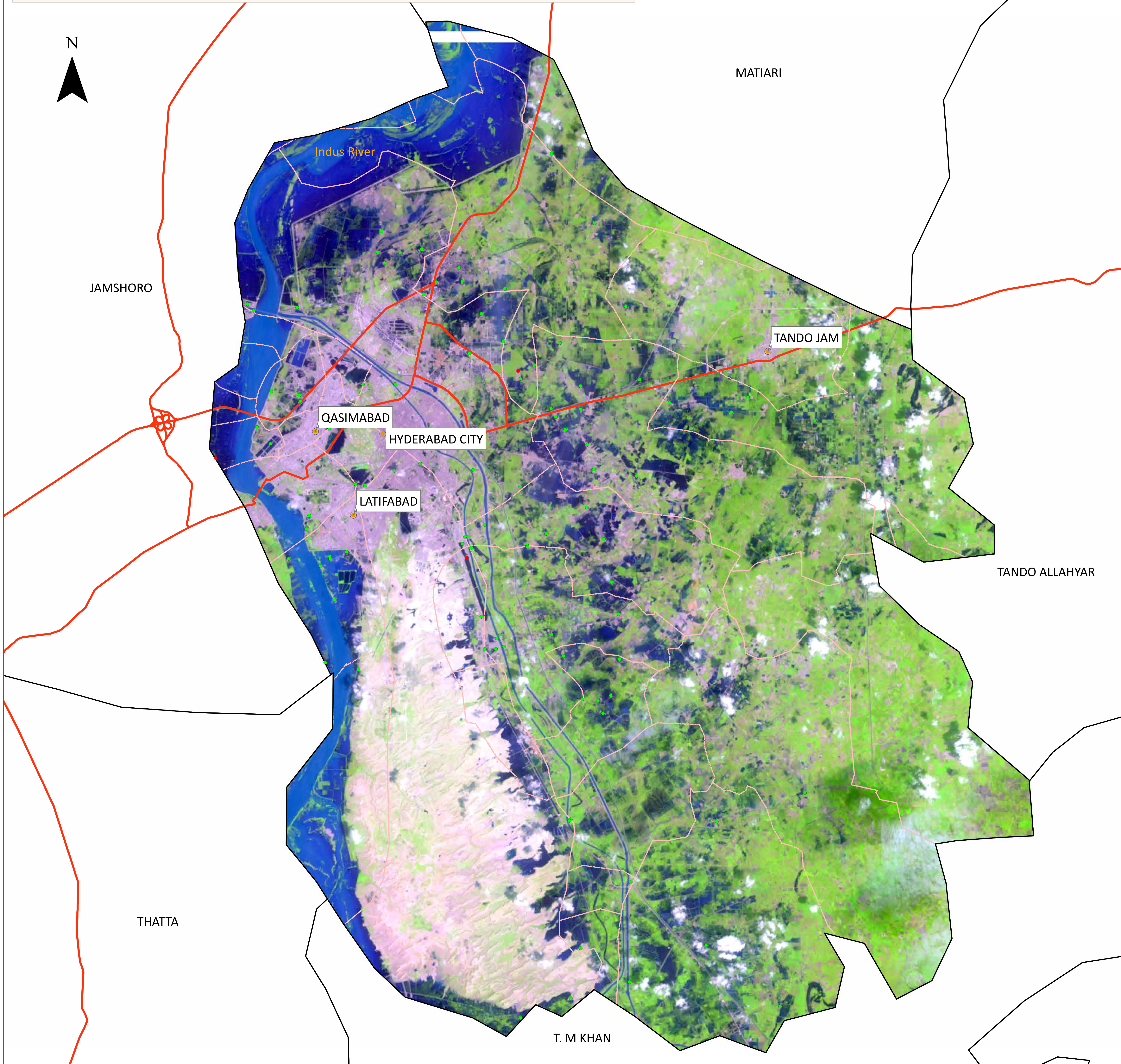
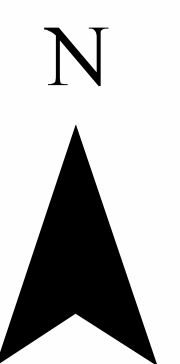


Flood Inundation in Hyderabad District



| District Profile | | | |
|---------------------------------|------------------|-----------------|----------|
| | 21/08/2022 | 13/09/2022 | Change |
| District Area | | 1,021.54 Sq.Km | |
| Area Inundated | 57.69 Sq.Km | 143.89 Sq.Km | +86.20 |
| | 5.65% | 14.09% | |
| Crop Land | 168,991.92 Acres | | |
| Crop Land Inundated | 13,194.18 Acres | 19,182.75 Acres | +5988.57 |
| | 7.81% | 11.35% | |
| Rainfall (Jul-Aug) | 1,059 mm | | |
| Population (as per 2017 Census) | 2,123,792 | | |
| Affected Union Councils | 25 Out of 35 | 30 out of 35 | |

| UC-wise Affected Villages | | | | | | |
|---------------------------|--------------------|------------|-----------|---------------------|------------|------------|
| Name | Submerged in Water | | | Surrounded by Water | | |
| | 21/08/2022 | 13/09/2022 | Change | 21/08/2022 | 13/09/2022 | Change |
| Haji Sawan Khan Gopang | - | - | 0 | 14 | 5 | -9 |
| Hatri | - | - | 0 | 9 | 15 | +6 |
| Husri | - | - | 0 | 8 | 10 | +2 |
| Latifabad 1 | 1 | - | -1 | 1 | 3 | +2 |
| Latifabad 2 | - | - | 0 | 3 | 2 | -1 |
| LATIFABAD -20 | - | - | 0 | 7 | 2 | -5 |
| LATIFABAD -23 | - | 1 | +1 | 1 | 1 | 0 |
| LATIFABAD -25 | - | - | 0 | 3 | 8 | +5 |
| Latifabad 4 | - | 1 | +1 | - | 2 | +2 |
| Latifabad 3 | - | - | 0 | 1 | 3 | +2 |
| LATIFABAD -32 | - | - | 0 | 1 | - | -1 |
| Latifabad 9 | - | - | 0 | 6 | 6 | 0 |
| MASU BHURGARI | - | 1 | +1 | 3 | 9 | +6 |
| MOOLAN | - | - | 0 | 3 | - | -3 |
| MUSO KHATIAN | - | - | 0 | 2 | 1 | -1 |
| SERI | 1 | - | -1 | 32 | 9 | -23 |
| TANDO FAZAL | - | - | 0 | 3 | 1 | -2 |
| TANDO HYDER | - | - | 0 | 6 | 8 | +2 |
| TANDO QAISAR | - | - | 0 | 8 | 10 | +2 |
| Latifabad 21 | - | - | 0 | - | 1 | +1 |
| Latifabad 22 | - | - | 0 | - | 1 | +1 |
| Latifabad 6 | - | - | 0 | - | 1 | +1 |
| Latifabad 5 | - | - | 0 | - | 1 | +1 |
| Latifabad 11 | - | - | 0 | - | 1 | +1 |
| Total | 2 | 3 | +1 | 111 | 100 | -11 |

Disclaimer: 30m resolution satellite image has been used for preliminary damage assessment and depicts status of flood inundation as of image acquisition date. The Union Council boundaries and names used in development of this product were obtained from Board of Revenue, Sindh.

Source: Landsat 9 Collection 2, 13 September 5: 57 GMT

